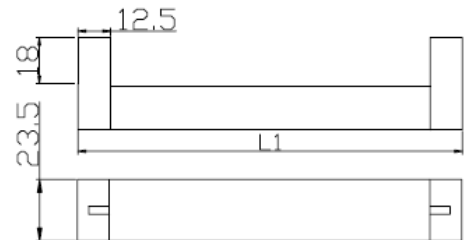
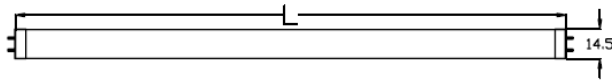
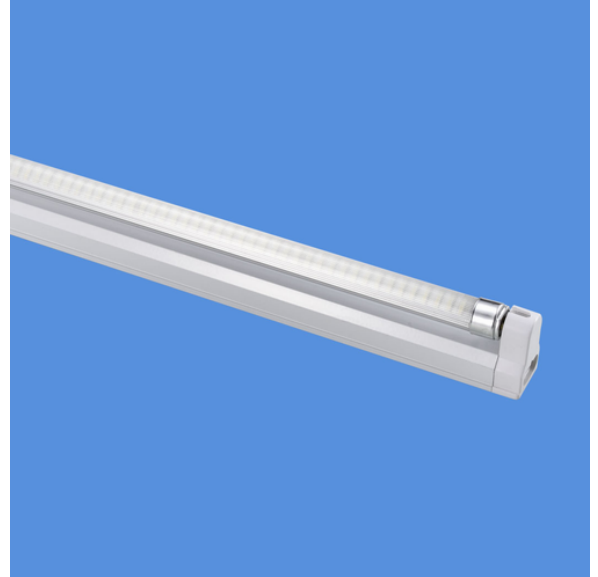


## Vega Series: LED T5 Tube

Available in 1', 2', 3', 4' and 5' lengths.

### Specifications

Base:	T5
Voltage:	AC 85-265V
Lighting Angle:	160 degrees
Lifespan:	50,000 hours
Operating Temp:	14° to 95°F, or -10° to 35°C
Color Temp:	
Warm White	2600°-3700°K
Day White	5000°-7000°K
Warranty:	2 Years



GreenCircleLight's LED Tube fixtures must be installed by a qualified electrician. It is the responsibility of the contractor, installer, purchaser, owner, and user to install, maintain, and operate the fixture in such a manner as to comply with all state and local laws, ordinances, regulations, and the American National Standards Institute Safety Code. Specification subject to change without notice. See website for latest version.

### Features

- Aluminum heat sink
- No Ultraviolet (UV) interference
- No Radio Frequency (RF) interference
- Patented heat sink & optical diffuser
- Longer life than incandescent & fluorescents
- Solid State Lighting (SSL)
- Vibration resistant
- Instant Start
- No ballast required
- Mercury free
- Wide voltage
- Constant current
- High shock
- Quiet, no noise
- No flickering

All products are ETL certified and in accordance with CE, UL and FCC testing standards.

**GreenCircleLights Inc**  
70-40 137th Street  
Flushing, NY 11367

Main: 917-817-3389  
Sales: 917-373-3022

	1 Foot (30 cm)	2 Foot (60 cm)	3 Foot (90 cm)	4 Foot (120cm)	5 Foot (150 cm)
<b>Catalog No.</b>	GCL-FT5-5W-001	GCL-FT5-9W-001	GCL-FT5-11W-001	GCL-FT5-16W-001	GCL-FT5-18W-001
<b>Wattage</b>	5	9	11	16	18
<b>Input voltage</b>	AC85V-265V	AC85V-265V	AC85V-265V	AC85V-265V	AC85V-265V
<b>Light output (Lumens)</b>	450LM	800LM	1100LM	1200LM	1500LM
<b>LED Count</b>	60 SMD LEDs	120 SMD LEDs	150 SMD LEDs	210 LEDs	270 SMDLEDs
<b>Lighting Angle</b>	160				
<b>LED Engine Manufacturer</b>	CREE				
<b>Lens Type</b>	Clear or Frosted				
<b>Color Temps Available</b>	<b>Warm White:</b> 2600° - 3700° K / <b>Daylight White:</b> 5000° - 7000° K				
<b>Operating Temp</b>	14° to 95°F or -10° to 35°C				
<b>Base / Fitting Type</b>	T5				
<b>Central Lux</b>	50 Lux/3m	50 Lux/3m	60 Lux/3m	60 Lux/3m	60 Lux/3m
<b>CRI</b>	80 (Typical)				
<b>Drive Type</b>	Isolated and Constant				
<b>Construction</b>	Impact resistant plastic & Integrated heat sink				
<b>Efficiency Rating</b>	90LM/W	89LM/W	100LM/W	75LM/W	83.3LM/W
<b>Lifespan- 70% Lumen MTBF</b>	50,000 Hrs				
<b>Power Factor</b>	0.9				
<b>Safety Grade</b>	IP64				
<b>Warranty</b>	2 Years				
<b>Diameter</b>	3cm				
<b>Net Weight</b>	0.21kg	0.35kg	0.46kg	0.59kg	0.74kg
<b>Shipping Box Weight (kg)</b>	0.565	0.78	0.97	1.17	1.475
<b>Shipping Box Size (cm)</b>	360*250*235	665*250*235	970*250*235	1570*250*235	1860*190*190
<b># per Shipping Box</b>	25				